



ICT Solutions for Education

25 years experience in providing cutting
edge ICT solutions

SchoolCare
Making ICT Easier



Dedicated to ICT for Education

CONTENTS

| | |
|----------------------------|----|
| About SchoolCare | 5 |
| ICT for education | 7 |
| Quality assurance | 9 |
| Support for education | 11 |
| Preserving the environment | 13 |
| Cutting edge skills | 15 |
| Quality solutions | 17 |
| Product development | 19 |
| Specialist technologies | 20 |
| Contact us | 21 |



“ICT requires investing in a solution which will be the standard for the foreseeable future and should not represent anything other than best value”

Steve Jones - Managing Director
SchoolCare

About SchoolCare

SchoolCare was formed over 25 years ago with the express aim of providing an informed and personal service to every customer no matter whether their requirements were large or small.

That ethos has continued through the years and enabled SchoolCare to build one of the South's leading ICT service providers dedicated to educational establishments. Today SchoolCare supports the ICT requirements of hundreds of schools from the smallest village primary to the largest college campuses and our philosophy remains the same; to provide cutting edge solutions at best value.

ICT technology now enables children to interact, collaborate and enjoy learning more than ever and at SchoolCare we strive to find the most innovative tools available in the marketplace. At the same time, we recognise that in 2011 the world also needs ICT products that are energy efficient and so our goal is to also provide ecologically sound solutions for a sustainable future.



Steve Jones – Managing Director

SchoolCare



“We would recommend
SchoolCare unreservedly...”

Philip Green Memorial School

Dedicated to ICT

Now more than ever, it is critical to have access to the latest in ICT technology from cloud platforms, virtualisation and 4th generation wireless.

SchoolCare is dedicated to developing cutting edge solutions to ensure that our advice is forward thinking so that every school and college invests wisely in the most suitable solutions for the education environment.

Every school or college is different and, accordingly, their infrastructure and educational requirements will vary widely. At SchoolCare we always look the best ICT solution to match those requirements and provide future proof designs that will enable us to form a long term partnership with our customer.

Consequently, every project has an appointed SchoolCare Account Manager whom is dedicated to ensuring that the solution offered is not only the best possible, but also delivered on time and on budget!



“...we recently upgraded our server and all computers in the suite...we found SchoolCare to be very competitively priced.”

Alison Hankins
Ad Astra First School

Dedicated to quality assurance

The quality of SchoolCare's expertise, systems and service is recognised through our ISO9001/2008 accreditation and thus our entire process for delivering ICT for schools and colleges is duly regulated.

Our quality policy is as follows:

- To meet fully the customer's requirements and those of ISO9001/2008
- To produce proven, reliable products in ICT for schools
- To continually improve the performance of the products by the full commitment of all staff to this policy
- To provide a service to the computer user industry that meets the best practices within the industry.





“It is testament to this service that our system has almost no down time in 8 years and as an ICT Co-ordinator this is very welcome indeed!”

Sandford CE VC Middle School

Dedicated to ICT support for education

With ICT expanding and becoming more complex in education, schools are now more reliant on the need for all of their systems to be running at their optimum performance throughout the school day.

ProFlex from SchoolCare is designed to be both Pro-active and Flexible, giving schools the peace of mind needed with access to technicians at anytime should a nasty surprise happen.

Whilst we continue to provide regular onsite ICT visits for schools we also now deploy sophisticated Pro-Active monitoring solutions to check the vital signs of your network and deal with problems before they arise.

With emergency support, telephone and online remote support, ProFlex can help keep every school and college working smoothly.





Making ICT Easier

Preserving the environment

At SchoolCare we pride ourselves in championing the use of ecologically sound ICT solutions that not only reduce the energy requirements and carbon footprint within educational organisations, but also improve the working experience for users.

SchoolCare has initiated its own in-house “Big Switch-Off” scheme to consolidate our large power hungry in-house servers, into more efficient Virtual Servers running on more efficient hardware. This reduces heat, noise and our carbon footprint. SchoolCare is also making a large amount of headway deploying these virtualisation technologies into the education sector.

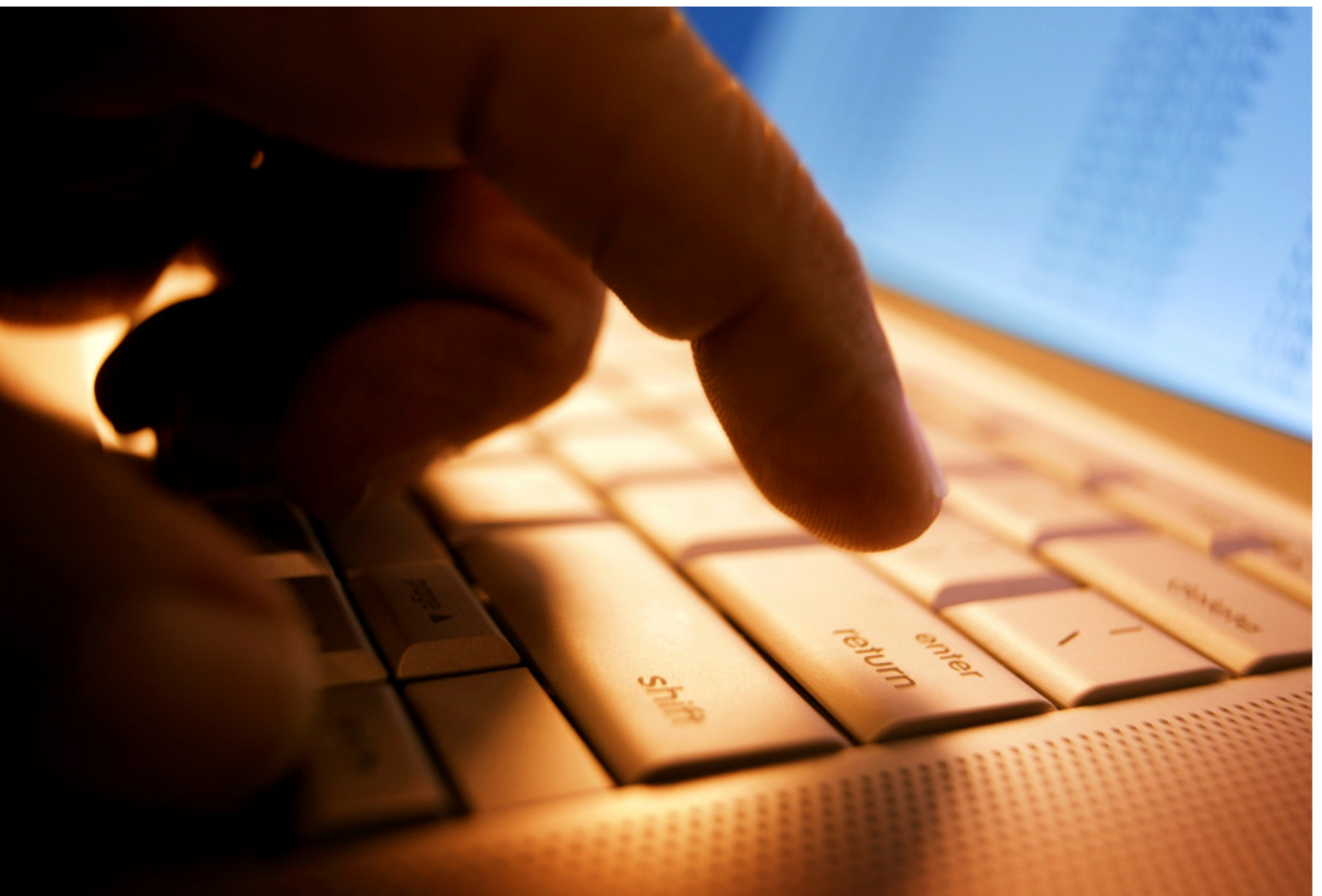
We have implemented a program of rolling replacement of our existing diesel vehicle fleet with vehicles which are up to twice as efficient and only produce around 119g/km of CO₂. That’s an average of 1288kg of CO₂ saved per vehicle per year.

Through the ICT ECO Mark, our membership of the CarbonZero Federation and our new carbon offsetting scheme, schools and college’s can significantly reduce their impact on the environment whilst not compromising the effectiveness of their ICT infrastructure.





Cutting Edge Skills



Dedicated to maintaining cutting edge skills

ICT is a tool to educate and inspire; to achieve this every member of the SchoolCare team shares a commitment to the important and purposeful work that they do.

SchoolCare recognises that each member of staff is our most important asset and so investment in training is paramount to our success. Fundamental to providing our customers with best value is an ongoing company commitment to training and personal development with each staff member encouraged to look for new initiatives to broaden our range of skills and services.



ACADEMIC SPECIALIZATION

15



“We were very happy with the quality of the [wireless] installation and the two engineers were pleasant, competent and mindful of operating in a school environment.”

Stephen Murch

IT Systems Manager

Christchurch Infant School



Dedicated to quality solutions

A fast, reliable and robust ICT infrastructure is now essential to any educational organisation and at SchoolCare any project, whether small or large, will have a team behind it sourcing the best value solution.

SchoolCare are partnered with some of the leading quality IT brands including Hewlett Packard, Microsoft and Meru Networks, together with access to just about every other significant manufacturer.



Leading ICT Solutions



Dedicated to product development

SchoolCare is constantly striving to develop useful products and services for the schools and colleges that we support.

Our own in-house development projects include NetCare Solutions Suite, a range of tools specifically designed for education that enables easy network management.

Other specialist areas include:

- On site engineering support
- Pro-active remote support
- Network management
- Anti-virus and network security
- Server virtualisation and cloud solutions
- 4th Generation Wireless solutions
- VoIP Telecommunications
- Audio visual systems
- Electrical and data cabling
- ICT Suite installations
- Hardware and software supply





Dedicated to specialist technologies



Today a wireless solution for education needs the capacity to support bandwidth-hungry multimedia content together with a fast, reliable connection. SchoolCare are specialists in Meru Networks 4th generation wireless systems, the leading solution for education.

SchoolCare can provide design consultancy, on-site demonstration equipment, installation and system configuration by Meru Approved Engineers.

SchoolCare offer a complete communications portfolio, our specialisms include complete Voice Over IP (VoIP) PBX Solutions as well as traditional Analogue and ISDN lines.



SchoolCare are providers of market leading Next Generation Access (NGA) Broadband solutions for education including Fibre Optic Managed leased lines up to 10Gbps as well as ADSL 2+ and Fibre to the cabinet (FTTC) and Fibre to the Premises (FTTP) Solutions.

Design and consultation

Meticulous preparation and planning is the key to the successful implementation of any IT project for your school and this is never more crucial than when considering an investment in your network infrastructure.

A new network infrastructure design for any school can be a substantial investment and as ICT network consultants our job is to ensure that your project meets every targets for quality, performance, future proofing, value and timescale.

Equipment Financing

SchoolCare can, through our specialist funding partners, assist schools in providing tailored leasing solutions for education whether a primary school, secondary school, college or university.

We understand school equipment funding and how to structure a funding solution to suit individual requirements whether over a short or long term period.

Hardware and software procurement

SchoolCare can offer 25 years of experience in the procurement of ICT hardware and software for schools and colleges.

From the supply of desktops, laptops, netbooks or tablets, through to servers, storage, switches or telecommunications equipment; we can advise on the best pricing.

Our service includes pre-sales support, logistics, asset tagging, extended warranty registration and post-sales support and maintenance.

Ordering through SchoolCare

We understand ICT for schools and colleges and know that you need expert advice, a competitive price and a simple means of ordering exactly what you need.

To order ICT products or services from SchoolCare you do not need to pay in advance or with a credit card.

Schools, colleges and universities can easily have an account created and pay through the SchoolCare invoice system.



Information and Sales

0845 86 22 660

sales@schoolcare.co.uk

www.schoolcare.co.uk



/schoolcare



/schoolcaretweet

